

AMERICA'S

# IDEALMISS

KANSAS  
MISSOURI

## Scholarship Pageant

April 2-3, 2022

B&B Live Performing Arts Theatre



SETTING THE STAGE FOR LIFE™

# KANSAS AND MISSOURI STATE PAGEANT **INFORMATION**



**April 2-3, 2022**

## **Contact**

[americasidealmissKS@gmail.com](mailto:americasidealmissKS@gmail.com)

[americasidealmissMO@gmail.com](mailto:americasidealmissMO@gmail.com)

America's Ideal Miss Kansas and Miss Missouri Office 913.744.8484

America's Ideal Miss National Office 470.604.4410

## **Pageant Registration**

[CLICK TO REGISTER NOW](https://bit.ly/IDEALKSMO)

<https://bit.ly/IDEALKSMO>

## **Pageant Venue**

**B&B Live Performing Arts Theatre**

16301 Midland Drive, Shawnee, Kansas 66217





# PAGEANT WELCOME



Welcome to America’s Ideal Miss Kansas and Miss Missouri Scholarship Pageant 2022. We are so excited you are joining us! You are about to embark on an extraordinary journey of self-discovery, empowerment and friendships that will remain forever memorable.

At America’s Ideal Miss Kansas and Miss Missouri, we are motivated by our vision and core values. We offer a prestigious state pageant that encourages and supports every contestant in her personal growth, professional development and community engagement. Community impact is a primary focus and we urge every contestant to embrace a meaningful commitment to service by becoming a change-maker for a charitable platform that resonates with her.

Our national scholarship organization, America’s Ideal Miss, raises the bar in the world of pageantry. The mission is to engage, inspire and celebrate girls and young women by offering an exceptional pageant experience, showcasing their strengths and maximizing their potential to prepare them for the stages of life ahead.

We believe success is not only about winning on stage. Ultimately, true success is determined by setting goals that motivate you, developing your path, and your drive to achieve each one. At America’s Ideal Miss, we want you to thrive in an environment surrounded by a team of powerhouse trendsetters who will educate, encourage and empower you to be the best version of yourself in every area of life. We want you to be IDEAL . . . **Be Impactful, Dynamic, Encouraging, Authentic, Loyal.**

Welcome to America’s Ideal Miss,  
where we’re setting the stage for life.



# AGE DIVISIONS, STATE TITLES AND PAGEANT STANDARDS



## AGE DIVISIONS

Jr Princess	Ages 4-6	Jr Teen	Ages 13-15
Princess	Ages 7-9	Teen	Ages 16-18
Preteen	Ages 10-12	Miss	Ages 19-27

Ages as of July 1, 2022

## STATE TITLES

America's Ideal Miss is offering 3 opportunities to compete for state and regional titles in each age division.

### Miss Kansas and Miss Missouri Titles

- Delegates competing for either state title must fulfill the state residency requirements (refer to State Pageant Eligibility Requirements)
- Delegates who reside in either state and pay the additional \$100 Regional Title Fee are eligible to compete for their state title and Miss Midwest titles

### Miss Midwest Titles

- Delegates competing for Miss Midwest titles must reside in the midwest region of the United States (refer to State Pageant Eligibility Requirements)
- Delegates from a state in the midwest region other than Kansas and Missouri can ONLY compete for Miss Midwest Titles

**We will be crowning a total of 18 State Queens!**

## PAGEANT STANDARDS

### Rules for Ages 4-9

- Makeup for Interview competition is not allowed
- Age appropriate makeup for stage competitions
- False eyelashes, flippers or false teeth are not allowed
- Bare midriffs are not allowed

### Rules for Ages 10-12

- Light and natural makeup for Interview competition
- Age appropriate makeup for stage competitions
- False eyelashes and natural hair extensions are allowed
- Flippers or false teeth are not allowed

### Rules for Ages 13-27

- Age appropriate makeup for Interview and stage competitions
- False eyelashes and natural hair extensions are allowed



2021 America's Ideal Miss  
Christine Williamson

## STATE PAGEANT ELIGIBILITY REQUIREMENTS

- Delegates competing for either state title must have a permanent and primary residence or be a full-time student in their state and a citizen of the United States
- Delegates competing for Miss Midwest titles must have a permanent and primary residence or be a full-time student in the midwest region and a citizen of the United State



2021 America's Ideal Miss Jr. Princess  
Ashlyn Hollifield

## STATE QUEEN REQUIREMENTS

- Must compete at the national pageant as stated in the contract and are responsible for the sponsorship fees (refer to national website)
- Are encouraged to make appearances throughout their reign
- Are invited to attend other America's Ideal Miss state pageants
- Are encouraged to serve their community through a platform or charitable organization that resonates with them
- Understands the America's Ideal Miss state title takes first priority over any other titles held
- Agrees to obtain written permission in order to compete in local, school or other pageants as stated in the contract
- Agrees to attend the state pageant the following year to crown their successors
- Refer to "AGREEMENT and RULES; Exhibit A: Rules, Regulations and Conduct Code" in the Registration Form for a complete list



# REQUIRED COMPETITIONS



Delegates will take part in three areas of required competition for our state titles.

## Personal Opening and Interview

The judges want to get to know YOU. Your personal opening should spark the interest and curiosity of the judges. They will be referring to your interview form for some of the questions. Delegates may wear a nice dress, jumpsuit or pants outfit. Delegates are judged on conversation skills, confidence and personality.

- Jr. Princess (ages 4-6) and Princess (ages 7-9) delegates will begin with their personal opening of up to 15 seconds. The round-robin style interview will be 2 minutes and your time will begin when you sit down at each judge's table.
- Preteen (ages 10-12), Jr. Teen (ages 13-15), Teen (ages 16-18) and Miss (ages 19-27) delegates will begin with their personal opening of up to 20 seconds. The panel-style interview begins when you walk in the room. You may stand behind, to the side, or in front of the lectern.
  - Preteen, Jr. Teen, Teen and Miss interviews will be 3 minutes

## Fun Fashion

Think red carpet and high fashion. This is your chance to showcase your fun style and upbeat personality. Delegates are judged on modeling skills, stage presence and personality. No hats, purses or props and no bare midriffs on ages 4-9.

## Evening Gown

Delegates will compete in an age appropriate floor-length gown. Judges will be looking for a dress selection that is a complimentary style, color and fit. Delegates are judged on poise, elegance and stage presence.

Interview



Fun Fashion



Evening Gown



# PAGEANT OPTIONALS

CLICK TO  
**REGISTER**  
bit.ly/IDEALKSMO

Delegates may choose to compete in the following Optional Competitions. These scores do not impact the selection of state queens.

## SPOKESMODEL

- One winner per age division
- Delegates present a speech on stage based on their platform or chosen community service initiative
- Presentation must be between 45 and 60 seconds
- Attire may be your interview outfit or a similar style
- Winning speeches will be featured on America's Ideal Miss Kansas and Miss Missouri social media
- Delegates are judged on content, personality and overall presentation
- Fee \$50 (*one entry limit*)



## CASUAL WEAR

- One winner per age division
- Delegates will model a trendy casual outfit
- No cocktail dresses
- The outfit must be age appropriate and showcase her personal sense of style and fashion
- Delegates are judged on modeling, stage presence and overall presentation
- Fee \$50 (*one entry limit*)



## TALENT

- One winner per age division
- Delegates perform a talent routine without assistance
- Presentation must be no longer than 90 seconds. If the time limit is exceeded, deductions will be made at the judges' discretion.
- Bring your music to registration on CD **and** flash drive
- Music must have a definite end and must be the only content on CD and flash drive
- All items needed on stage must be listed on the Talent Form
- For piano performances, delegates must supply their own keyboard
- Fee \$50 (*one entry limit*)

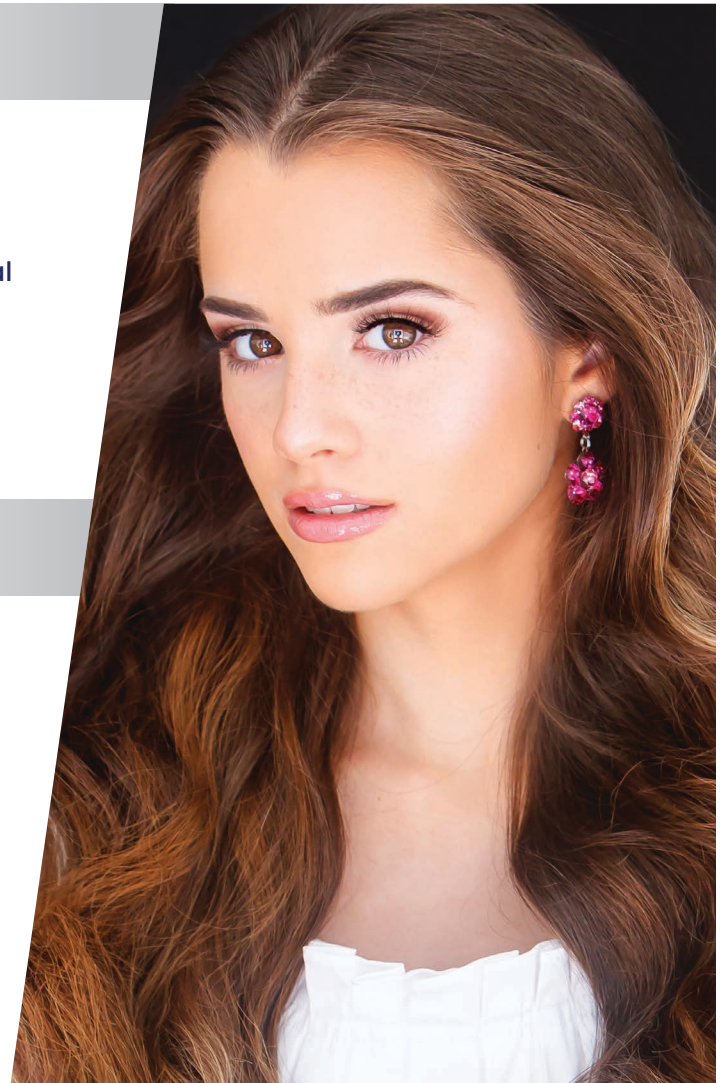


## IDEAL TALENTED MISS

- One winner per age division
- Combination of Talent, Spokesmodel and Interview scores will determine winners
- Delegates must enter Talent, Spokesmodel and Ideal Talented Miss optional competitions to be eligible
- Fee \$75 (*one entry limit*)

## IDEAL SUPERMODEL

- One Junior Division winner (*ages 4-12*)
- One Senior Division winner (*ages 13-27*)
- Combination of Spokesmodel, Casual Wear and Photogenic scores will determine winners
- Delegates must enter Spokesmodel, Casual Wear, Photogenic and Ideal Supermodel optional competitions to be eligible
- Fee \$75 (*one entry limit*)



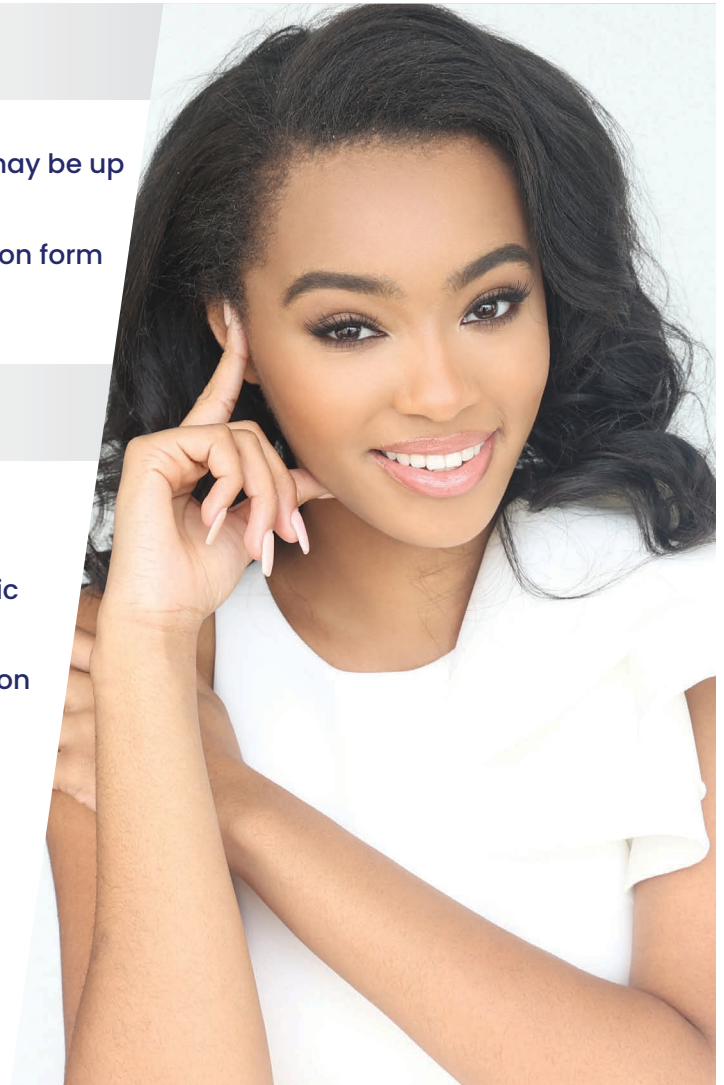


## PHOTOGENIC

- One winner per age division
- Black and white or color photos are accepted and may be up to size 8.5" X 11"
- All photos must be submitted online in the registration form
- Fee \$50 per photo (*unlimited entries*)

## COVER MODEL

- One Junior Division winner (*ages 4-12*)
- One Senior Division winner (*ages 13-27*)
- Photo can be the same one submitted for Photogenic or a different photo
- All Photos must be submitted online in the registration form
- Fee \$75 per photo (*unlimited entries*)

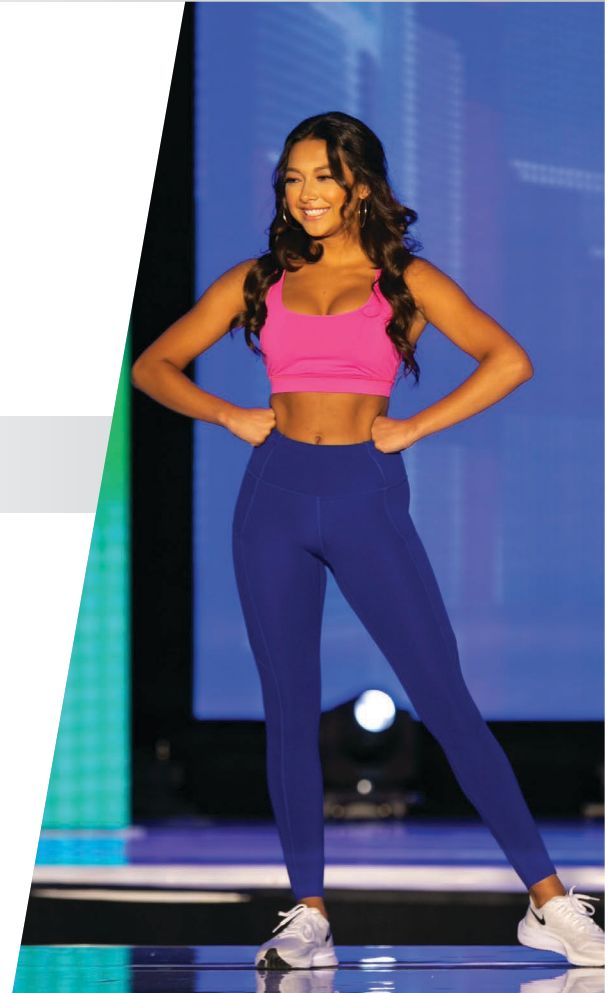


## ACTIVEWEAR

- One Jr. Teen division winner (ages 13-15) and one Teen division winner (ages 16-18)
- Contestants model athletic leggings or capris with any style athletic top
- Outfit may be any color
- Delegates are judged on physical fitness, confidence and overall presentation
- Fee \$35 (one entry limit)

## SWIMSUIT

- One winner from each Jr. Teen, Teen and Miss divisions
- Contestants may wear one piece or two piece styles
- Tops must have full coverage and bottoms cannot be thongs
- A waist-down cover up can be worn and must be removed while modeling on stage
- Contestants model onstage without an audience present
- Delegates are judged on physical fitness, confidence and overall presentation
- Fee \$35 (one entry limit)



# PAGEANT

## JUDGING AND SCORING

CLICK TO  
**REGISTER**  
[bit.ly/IDEALSMO](http://bit.ly/IDEALSMO)

- America's Ideal Miss delegates take part in three areas of competition for state titles
  - Personal Opening and Interview
  - Fun Fashion
  - Evening Gown
- All three required competitions are scored on an equally weighted basis
- 1-25 point scoring scale
- Judges break all ties and judges' decisions are final
- Optional Competition scores have no impact on the selection of state queens
- Delegate scores will be emailed within three weeks following the pageant







## AWARDS

### BEST INTERVIEW

- One winner per age division
- Award will be given to the contestants with the highest interview scores

### PEOPLE'S CHOICE

- One winner per age division
- Delegates must upload one headshot in the registration portal by March 1, 2022
- Headshot may be the same or a different photo than used for Photogenic optional
- Fans will have the opportunity to vote online for their favorite delegates

## FEES

### Required Competition Fees for Miss Kansas and Miss Missouri and Miss Midwest titles

- \$350 Sponsorship Fee (*\$250 due upon online registration and \$100 balance due by March 14, 2022*)
- \$50 Scholarship Fund
- \$25 America's Ideal Miss T-Shirt
- \$10 Feeding America Donation

**TOTAL: \$435**

### Regional Title Fee

**(Optional for Kansas and Missouri residents ONLY to be eligible for their state & regional titles)**

- \$100 Kansas and Missouri AND Midwest

### Optional Competitions Fees

- \$50 Spokesmodel
- \$50 Casual Wear
- \$50 Talent
- \$50 per Photogenic Photo (*unlimited entries*)
- \$75 Ideal Talented Miss (*must also enter Talent, Spokesmodel and includes Interview*)
- \$75 Ideal Supermodel (*must also enter Spokesmodel, Casual Wear and Photogenic*)
- \$75 Cover Model (*unlimited entries*)
- \$35 Activewear
- \$35 Swimsuit

### State Pageant Ticket Pricing

- \$25 All Competitions and Crowning Admission Tickets
- Tickets may be purchased in advance or at the door
- Children under 6 are free

# OFFICIAL STATE PRIZE PACKAGES



Our state queens will receive valuable prizes and unique opportunities throughout their reigning year.

## AMERICA'S IDEAL MISS KANSAS AND MISS MISSOURI PRIZE PACKAGE

- \$495\* Paid Registration Fee for National Pageant
- Official America's Ideal Miss Custom State Crown
- Official America's Ideal Miss Embroidered Rhinestone State Sash
- Official America's Ideal Miss Signature State Trophy
- Queens Floral Bouquet
- Cash Scholarship\*\*
- Customized America's Ideal Miss fashion sling bag compliments of the National Office



## AMERICA'S IDEAL MISS MIDWEST PRIZE PACKAGE

- \$495\* Paid Registration Fee for National Pageant
- Official America's Ideal Miss Custom Crown
- Official America's Ideal Miss Embroidered Rhinestone Sash
- Official America's Ideal Miss Signature Trophy
- Queens Floral Bouquet
- Customized America's Ideal Miss fashion sling bag compliments of the National Office

*\*National Registration Fee prize monies cannot be combined and cannot exceed \$495. It is applicable only to the National Pageant Registration Fee. This prize is non-transferable and cannot be exchanged for cash value.*

*\*\*Cash Scholarship amount determined according to the number of registered contestants.*

**Prize Package is still growing!**



## RUNNERS UP PRIZE PACKAGE

### 1st and 2nd Runners Up in all six age divisions will receive

- \$195\* towards National Registration Fee
- Official Signature State Trophy

### 3rd and 4th Runners Up in all six age divisions will receive

- \$195\* towards National Registration Fee
- Official Signature State Trophy

## OPTIONAL COMPETITIONS PRIZE PACKAGE

- **SPOKESMODEL** – Official Signature State Trophy
- **CASUAL WEAR** – Official Signature State Trophy
- **PHOTOGENIC** – Official Signature State Trophy
- **TALENT** – Official Signature State Trophy
- **ACTIVEWEAR** – Official Signature State Trophy
- **SWIMSUIT** – Official Signature State Trophy
- **IDEAL SUPERMODEL**
  - Both winners will receive \$195\* Paid Registration Fee for National Pageant
  - Embroidered Sash and Crown
- **IDEAL TALENTED MISS**
  - Winners will receive \$195\* Paid Registration Fee for National Pageant
  - Embroidered Sash and Crown
- **COVER MODEL**
  - Junior Division winner will be featured on the inside back cover of the program book
  - Senior Division winner will be featured on the inside front cover of the program book
  - Winners will receive \$195\* Paid Registration Fee for the National Pageant
  - Embroidered Sash and Crown

## AWARDS

**BEST INTERVIEW** – Official Signature State Trophy

**PEOPLE'S CHOICE** – Official Signature State Trophy

*\*National Registration Fee prize monies cannot be combined and cannot exceed \$495. It is applicable only to the National Pageant Registration Fee. This prize is non-transferable and cannot be exchanged for cash value.*

*America's Ideal Miss Kansas and Miss Missouri reserves the right to substitute prizes for equal or greater value. America's Ideal Miss Kansas and Miss Missouri is not responsible for any prizes that are forfeited by sponsors. Prizes are non-transferable and cannot be exchanged for cash value.*



## BACKSTAGE AND DRESSING ROOM POLICIES

- Only one female adult assistant per delegate allowed in the dressing room
- Assistants are not allowed backstage or in the wings
- Men are not allowed in the dressing rooms
- Photography or video in the dressing rooms is strictly prohibited and will result in disqualification without the benefit of any refund



## SPORTSMANSHIP

Being a good sport means demonstrating self-control and respect for others. These are qualities in which Ideal Miss role models possess.

- Poor sportsmanship will not be tolerated from delegates, family, friends or guests
  - Attendees in violation will be asked to leave without the benefit of any refund
  - Delegates in violation will forfeit all awards, prizes, gifts and all fees
  - In support of all delegates, we ask guests to clap and cheer for everyone

We look forward to a pageant where every delegate feels like she's progressed and benefited from her participation. We are here to empower and support each young woman



Tentative

## SATURDAY APRIL 2

4:00–5:00<sub>PM</sub> REGISTRATION

5:30–6:30 REHEARSAL

6:30–7:00 PJ PARTY

## SUNDAY APRIL 3

8:00–9:00<sub>AM</sub> OPEN STAGE

10:00 JR DIVISION OPTIONALS

10:00 SR DIVISION INTERVIEWS

12:00<sub>PM</sub> JR DIVISION INTERVIEWS

12:00 SR DIVISION OPTIONALS

2:00–2:30 FINALS REHEARSAL

4:30 FINALS, AWARDS and CROWNING

6:00 QUEENS PHOTO SHOOT and  
CONTRACT SIGNING

**\*\*All delegates need to be ready and backstage for all competitions 10 minutes prior to starting time\*\*\*\***

### PHOTOS

At the conclusion of the pageant, all crowned state queens must remain for individual and group photos.

- Miss Kansas Queens
- Miss Missouri Queens
- Miss Midwest Queens
- Ideal Talented Miss Queens
- Ideal Supermodel Queens
- Cover Model Queens

# PAGEANT ITEMS TO BRING



- Copy of birth certificate  
*(phone copy is acceptable)*
  - Talent Music CD *and* Flash Drive
  - Keyboard  
*(if talent requires)*
- 
- America's Ideal Miss t-shirt  
*(pick up your t-shirt at registration)*
  - White Shorts, Pants or Skirt  
*(to be worn with your America's Ideal Miss t-shirt for rehearsal and group photo)*





# MESSAGE FROM THE DIRECTOR

---



To all our delegates, this year's America's Ideal Miss Kansas and Miss Missouri Scholarship Pageant promises to be exciting and fulfilling! We hope you are ready for an unforgettable experience that will be impactful and rewarding. And for eighteen newly crowned titleholders, it will be the beginning of an incredible journey of personal growth as they advance on to the most sought-after national pageant of 2022!

We are here for you and available to answer any questions, so please feel free to contact us! We look forward to seeing you on our fabulous stage at the first America's Ideal Miss.

Sincerely,

*Katie Lyons*

Katie Lyons  
America's Ideal Miss Kansas and Miss Missouri State Director  
913.744.8484  
[americasidealmissKS@gmail.com](mailto:americasidealmissKS@gmail.com)  
[americasidealmissMO@gmail.com](mailto:americasidealmissMO@gmail.com)

